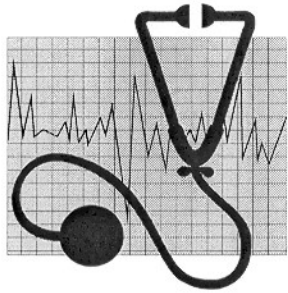


Basic Arrhythmia Recognition

Redlands Community Hospital
Weisser Education Pavilion



Course Credit

The provider is approved by the California Board of Registered Nursing CEP #491. This program is approved for eighteen (18) contact hours.

Course Presenter

David Carpenter, RN, BSN, Redlands Community Hospital Clinical Education Coordinator, graduated with baccalaureate degrees in history/political science as well as nursing. He worked Critical Care for 10 years, and a variety of roles in Medical/Surgical Nursing. David is committed to striving not only for excellence in education and clinical practice, but also to making his classes interesting and relevant.

Course Description

This course is designed as an introduction to cardiac arrhythmias using single-lead continuous ECG monitoring. The content includes a review of cardiac anatomy/physiology, hemodynamics, and electrophysiology, including the role of autonomic nervous system innervation.

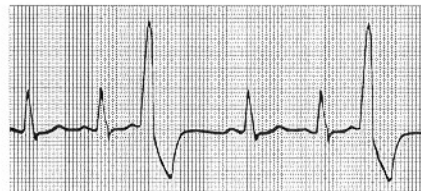
Prerequisite

Basic knowledge of cardiopulmonary anatomy and physiology

Course Objectives

Upon completion of this course the participant will be able to:

- ♥ Systematically analyze rhythm strips
- ♥ Identify sinus, atrial, junctional, ventricular arrhythmias and atrio-ventricular blocks
- ♥ Recognize pacing artifact, sense and capture
- ♥ Discuss the hemodynamic effects of selected arrhythmias
- ♥ Select appropriate interventions for life-threatening arrhythmias



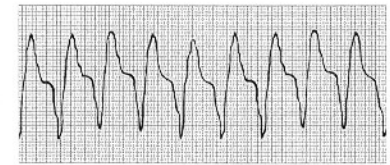
Program Fees:

General Participants: \$125.00*
RCH Employees: \$ 60.00* (deposit)
Study Book Only: \$ 40.00**

* Includes book, calipers, and CEUs

** Available through RCH Education Department or at Loma Linda Bookstore

An administrative fee of \$20.00 will be charged for cancellations up to 5 days prior to class. No refunds will be given for cancellations after 5 days prior to class date. In the event the program is canceled, a full refund will be given.



Class size is limited and **prior registration is required**. Please utilize the form on the reverse to confirm your attendance.

A map and confirmation letter will be mailed to registrants including information regarding parking and classroom location.

For further information please contact the Education Department at Redlands Community Hospital (909/335-5530).